

## 1. Warning

**\*\*Warning: Read the safety instructions before you start installation. If these instructions are not followed, the Manufacturer's liability and warranty are forfeited. Manufacturer is not liable for any change in the regulations and standards introduced after the publication of this manual.**

- 1). Refer to professional technician to install and test following instructions.
- 2). Stop using this motor if any damage, especially power wire and motor cover. To avoid any kind of incidence, please get help from the local dealer, manufacturer or qualified staff to replace the damaged power wires.
- 3). In case there are kids around the motor, please guide and install the motor safely out of kids reach, make sure no body hurt and follow the safety regulation.
- 4). During daily maintenance, do not get any water into the motor especially while window/curtain cleaning.
- 5). Place the radio control out of kids reach.
- 6). Check the motor drive parts are properly working, as well as close/open functions.
- 7). Installing motor firmly and safely.
- 8). Reliable power socket with ground.
- 9). The power wires must have some space to be away from the curtain track, curtain runners and master carrier.
- 10). Select a good ventilation and dry environment for the motor to install.
- 11). The dry position is good for motor in long-run, replace new batteries to the transmitter periodically to get good transmission performance(in case of short transmission distance, replace the batteries).
- 12). Cut of the power in case of any maintenance or repairing.

## 2. Technical Data

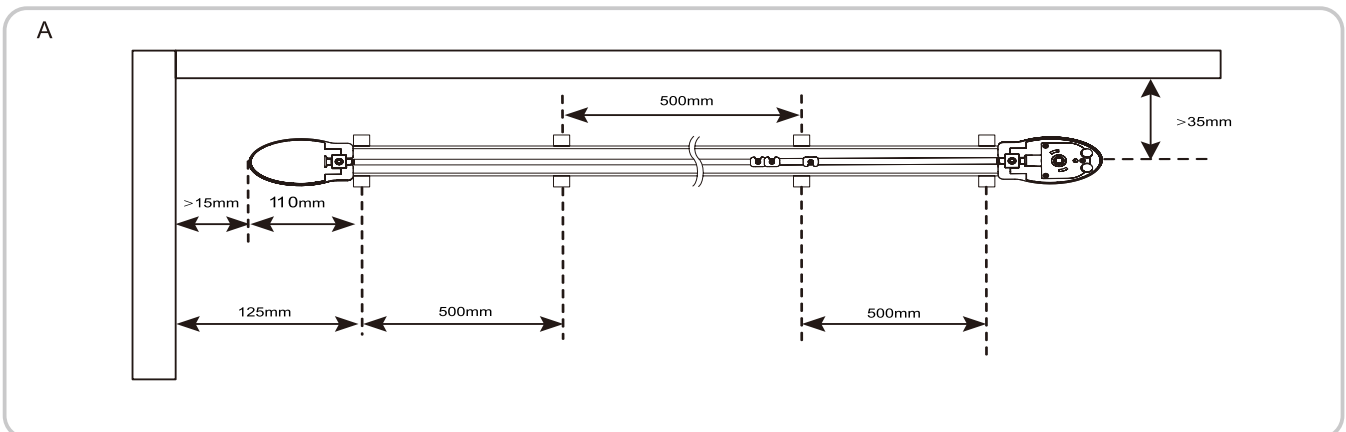
Power supply	100V - 240V ~ 50/60Hz
Radio frequency	433.92MHz
Operating temperature	0°C to + 60°C
Index protection rating	IP 30
Safety level	Class I

## 3. Installation

**\*\*Caution:** - Instructions which must be followed by the drive and home automation professional installing the motor.  
 - Never drop, knock, drill or submerge the drive.  
 - Install a separate control point for each drive.

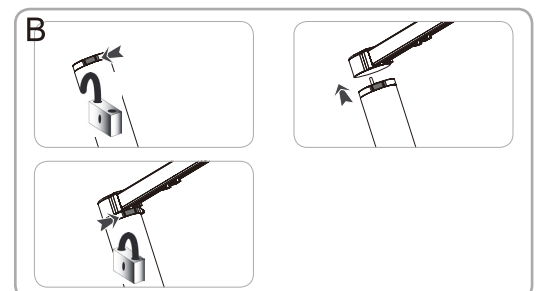
### 3.1. Installation

#### 3.1.1. Installation of the rail (Fig A)



#### 3.1.2. Installation of the motor (Fig B)

- 1) Unlock the motor
- 2) Insert the motor shaft into the drive pulley hole.
- 3) Lock the motor.



### 3.2. Wiring (Fig C)

**Warning:**

- Attach cables to prevent any contact with moving parts.
- Cables which pass through a metal wall must be protected and isolated using a sheath or sleeve.
- Leave the drive power supply cable accessible: it must be possible to replace it easily.

- Switch off the power supply.
- Connect the drive according to the information in the table below:

#### AC wiring (Fig C1)

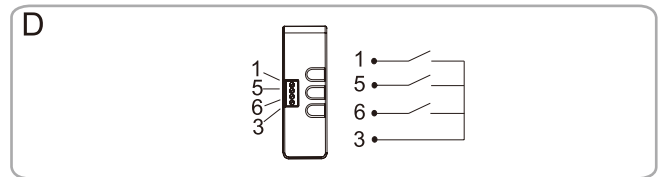
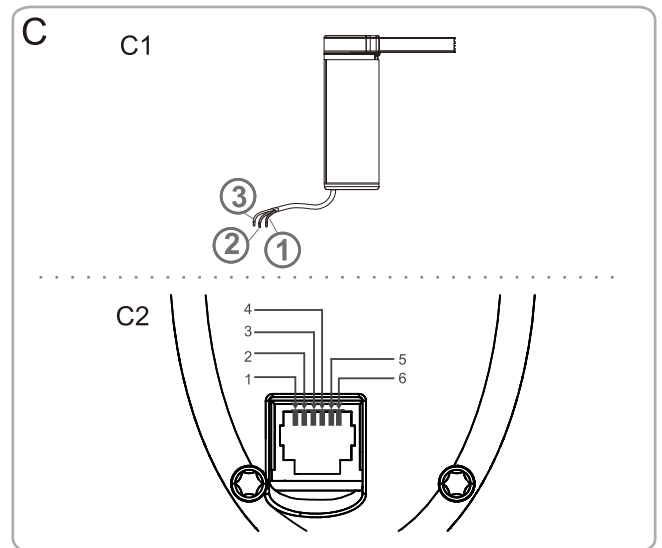
	Wire	100V to 240V
1	Neutral	Blue
2	Live	Brown
3	Earth	Yellow / Green

#### DCT wiring (Fig C2)

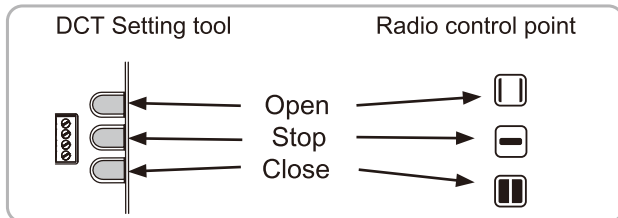
1	CCW (Open) NO Dry contact	4	
2		5	Stop - NO Dry contact
3	Ground Common	6	CW (Close) NO Dry contact

- Compatible controls - Wiring of control

#### Setting tool (Fig D)

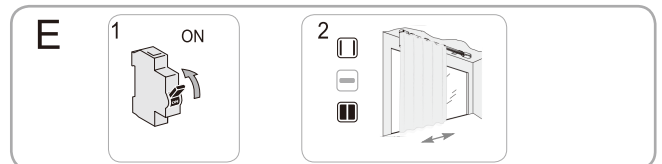


### 3.3. Commissioning



#### 3.3.1. Pre-programming the Radio control point (only for Radio version) (Fig E)

- 1) Switch on the power supply
- 2) Press the **Open** and **Close** buttons on the Radio control point at the same time: The motorised product moves. and the Radio control point is pre-programmed in the motor.

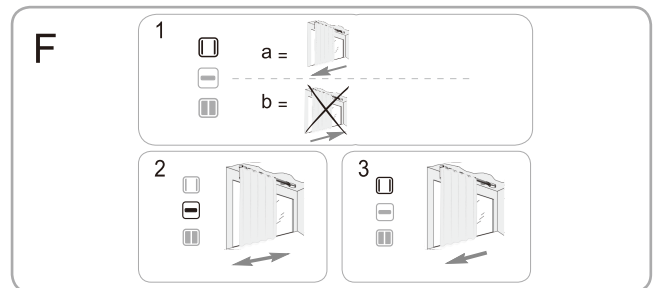


#### 3.3.2. Setting the end limits

At the first command Open or Close, the motorised product make a first run to record the hard stop position.

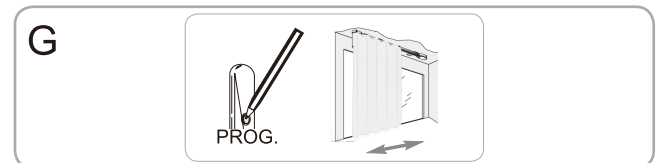
#### 3.3.3. Checking the direction of rotation (Fig F)

- 1) Press the **Open** button on the Radio control point:
  - a) If the motorised product opens (a), the direction of rotation is correct.
  - b) If the motorised product closes (b), the direction of rotation is incorrect: Move onto the next step.
- 2) Press the **Stop** button on the Radio control point until the motorised product moves: The direction of rotation has been modified.
- 3) Press the **Open** button on the Radio control point to check the direction of rotation.



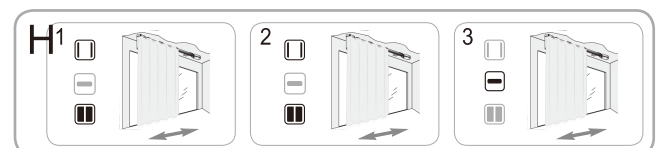
#### 3.3.4. Recording the Radio control point (Fig G)

Press the PROG button on the back of the control point until the motorised product moves. The remote control address is permanently recorded.



#### 3.3.5. Adjusting the Touch motion sensitivity (Fig H)

- 1) Press the **Open** and **Close** buttons of the Radio control point simultaneously until the motorised product moves.
- 2) Press the **Open** and **Close** buttons simultaneously until the motorised product moves to switch from high sensitivity, to low sensitivity, to no touch motion, and back to high sensitivity.
- 3) Press the **Stop** button until the motorised product moves to confirm the setting.



### 3.4. Tips and recommendations for installation

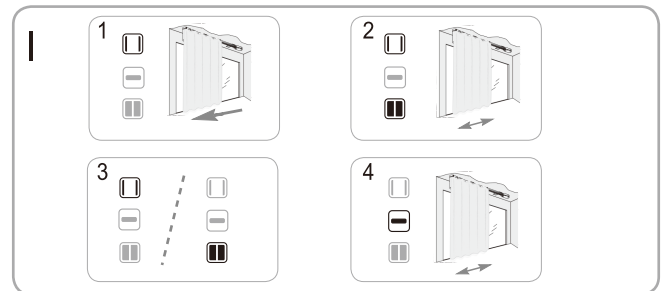
#### 3.4.1. Questions about the motor?

Observations	Possible causes	Solutions
The motorised product does not operate.	The wiring is incorrect.	Check and reconnect the power supply
	The control point battery is weak.	Check whether the battery is weak and replace it if necessary.
	The control point is not compatible.	Check for compatibility and replace the control point if necessary.
	The control point used has not been programmed into the motor.	Use a programmed control point or program this control point.

#### 3.4.2. Re-setting the end limits

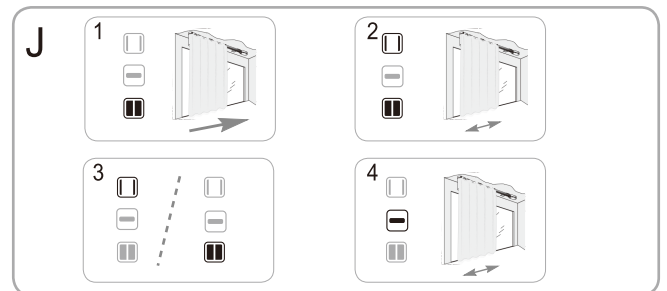
##### Readjusting the Open end limit (Fig I)

- 1) Press the **Open** button to move the motorised product to the end limit to be readjusted.
- 2) Press the **Open** and **Close** buttons of the Radio control point simultaneously until the motorised product moves.
- 3) Press the **Open** or **Close** button to move the motorised product to the new desired position.
- 4) To confirm the new end limit, press the **Stop** button until the motorised product moves.



##### Readjusting the Close end limit (Fig J)

- 1) Press the **Close** button to move the motorised product to the end limit to be readjusted.
- 2) Press the **Open** and **Close** buttons of the Radio control point simultaneously until the motorised product moves.
- 3) Press the **Open** or **Close** button to move the motorised product to the new desired position.
- 4) To confirm the new end limit, press the **Stop** button until the motorised product moves.

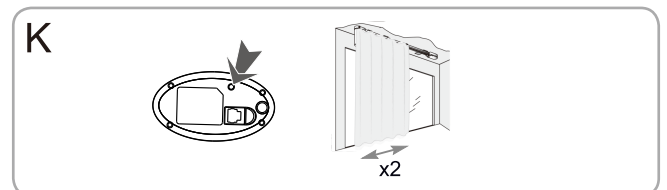


#### 3.4.3. Erasing the control point from the memory of the motor (Fig K)

This reset deletes all the local control points, however the end limit settings and favourite position are retained.

To delete all the programmed control points, use a pin to press and hold the motor PROG button at the bottom side until the product moves twice.

All the control points are deleted.

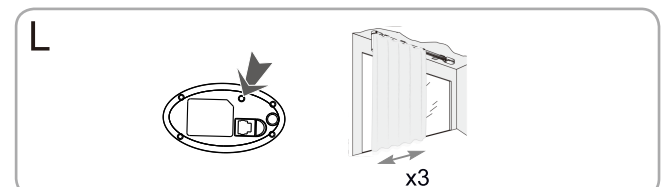


#### 3.4.4. Erasing the memory of the motor (Fig L)

This reset deletes all control points, all the sensors and all the end limit settings, and resets the motor's favourite position.

To reset the motor, use a pin to press and hold the PROG button at the bottom side until the motorised product moves 3 times.

All the settings are erased.



## 4. Use and maintenance

- This drive is maintenance-free

### 4.1. Open and close buttons (Fig M)

Pressing the **Open** or **Close** button fully opens or closes the motorised product.

### 4.2. Stop function (Fig N)

The motorised product is moving.  
Briefly press **Stop**: the motorised product stops automatically.

### 4.3. Favourite position(my) (Fig O)

The motorised product is stopped.  
Briefly press **Stop**: the motorised product starts to move, and stops in the favourite position(my).  
To modify or delete the favourite (my) position, see the section entitled "Additional settings".

### 4.4. Additional settings

#### 4.4.1. Modifying the favourite position (my) (Fig P)

- 1) Place the motorised product in the desired favourite position.
- 2) Press **Stop** for ≈ 5 seconds until the motorised product moves: the desired favourite position (my) has been programmed.

#### 4.4.2. Deleting the favourite position (my) (Fig Q)

- 1) Press **Stop**: the motorised product starts to move, and stops in the favourite position (my).
- 2) Press **Stop** again until the motorised product moves: the favourite position (my) is deleted.

#### 4.4.3. Adding/Deleting a radio control points

##### - Adding radio control points

**Option 1:** Press the PROG button of paired control point 2sec, the motorised product moves. Then press the PROG button of the control point to be paired, the motorised product moves. Adding is finished.

**Option 2:** Press the PROG button on the bottom side of the motorised product 2sec, it moves. Then press the PROG button of the control point to be paired, the motorised product moves. Adding is finished.

##### - Deleting radio control points

**Option 1:** Press the PROG button of paired control point 2sec, the motorised product moves. Then press the PROG button of the other control point to be deleted, the motorised product moves. Deleting is finished.

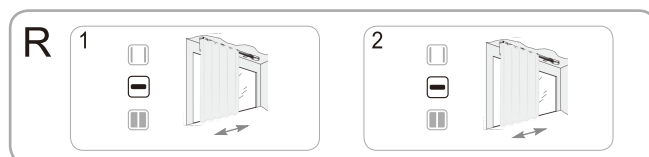
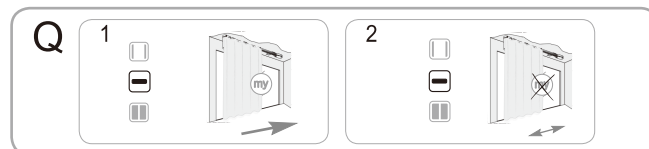
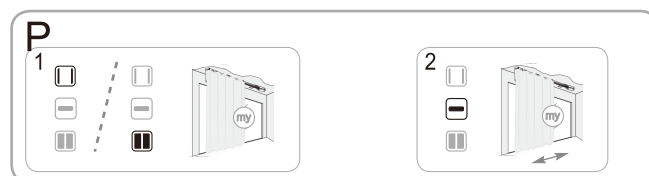
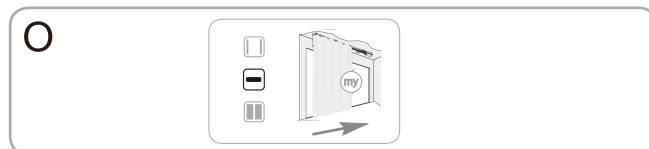
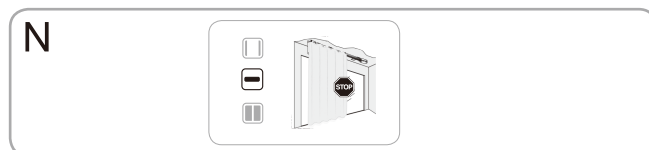
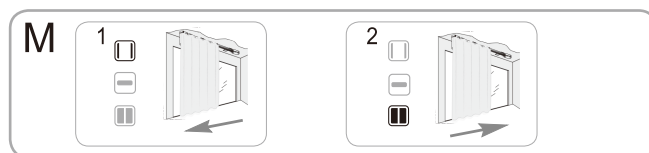
**Option 2:** Press the PROG button on the bottom side of the motorised product 2sec, it moves. Then press the PROG button of the control point to be deleted, the motorised product moves. Deleting is finished.

**Option 3:** Refer to 3.4.3 to delete all radio control points

#### 4.4.4. Modifying the motor rotation direction (Fig R)

Move the motorised product away from the end limits.

- 1) Press the **Open** and **Close** buttons of the Radio control point simultaneously until the motorised product moves.
- 2) Press the **Stop** button until the motorised product moves to reverse the rotation direction.



### 4.5. Tips and recommendations for use

#### 4.5.1. Questions about the motor?

Observations	Possible causes	Solutions
The motorised product does not operate.	The control point battery is weak.	Check whether the battery is weak and replace it if necessary.
	The motorisation is in thermal protection mode.	Wait for the motor to cool down.

#### 4.5.2. Replacing a lost or broken Radio control point

To replace a lost or broken control point, contact a Radio motorisation and home automation professional.